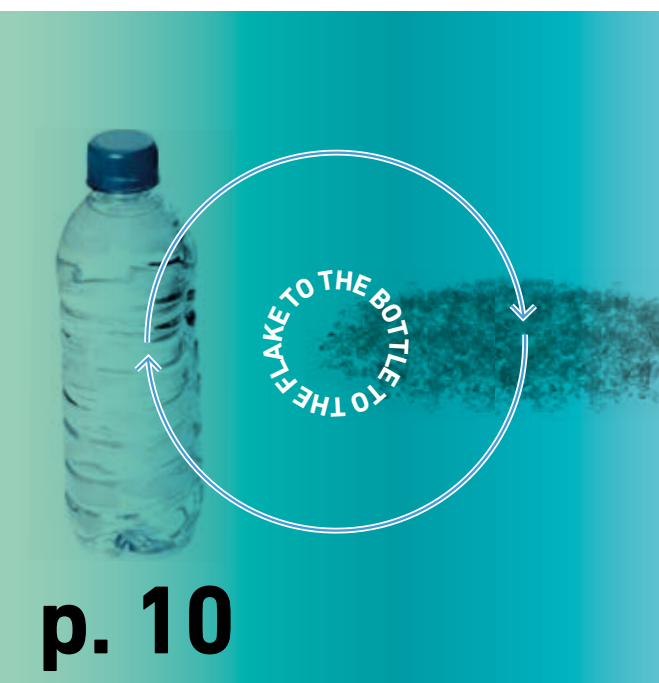


RECYCLING.
BETTER THAN DISPOSAL.
WITH REILING.







p. 10



p. 14



p. 18



p. 20



p. 26



p. 24

TABLE OF CONTENTS

p. 04	Reiling News
p. 06	Rethinking used glass
p. 10	Lightweight, right on trend: PET recycling
p. 14	Up to speed. Paper recycling
p. 16	From rustic fences to Euro pallets. Wood recycling
p. 18	Brilliant ideas for new energy
p. 20	Uniquely versatile. Our services
p. 22	Quality and innovation. Hand in hand
p. 24	Four generations, one goal: Using recyclable materials
p. 26	Locations. Wherever you are

1 MILLION TONNES

of glass, plastics, paper
and other materials are
processed by Reiling every
year.



➤➤ PROTECTING RESOURCES,
SAVING THE ENVIRONMENT.
WITH REILING. ⬅️⬅️

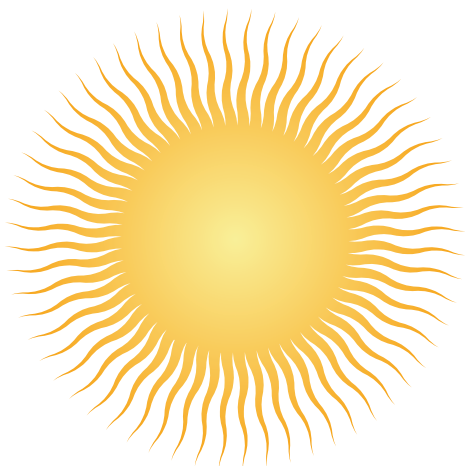
Glass recycling – One idea further

White, brown, green, blue... glass is a fascinating material that comes in a huge range of colours. We have taken advantage of this. We use glass as a decorative design feature and a useful construction material. Revitro – a 100% recycled product with 1001 possibilities.



X-ray please!

How can critical substances like lead glass and glass ceramics be removed from the glass to be processed? Difficult to see with the naked eye, they are immediately visible with x-ray fluorescence analysis. The process captures the chemical composition of every fragment and removes the aforementioned critical substances - an intelligent technology that guarantees high fragment quality. Incidentally, we also use the latest methods to capture the glass colour, using sensor-supported sorting.



Sunny forecast

Glass is the main component of many photo-voltaic modules, which we recover through our processing technology. We also use many other raw materials from used modules, allowing us to extract metals which are in limited supply from the earth, and return them to the material cycle.

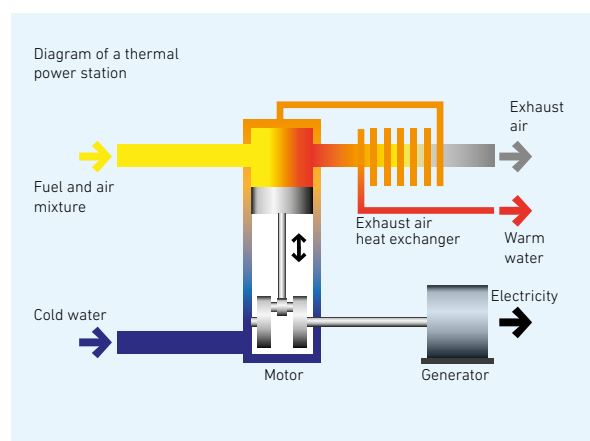
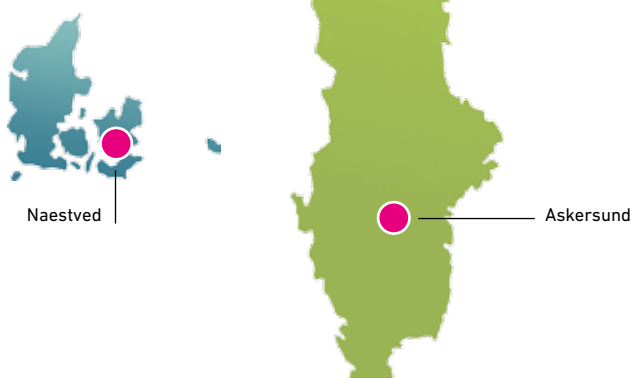
First of its kind!

In the 1970s, Reiling set up the first bottle bank in the town of Gütersloh.



Reiling is always developing.

We are at your service at 16 locations in Germany and abroad. Since 2013 this has included Askersund in Sweden and Næstved in Denmark.



Sustainable energy

Being energy conscious is one of our company's most important principles. Some practical examples of this are our cogeneration plants for heat and power, our photovoltaic systems for generating our own electricity and woodchip heating for generating heat. . Since the end of 2011, the entire Reiling Group has been gradually undergoing certification in accordance with the ISO 50001 energy management system.



RETHINKING **USED GLASS.**

Glass is a material that can be used again and again without losing any of its quality. As an experienced recycling company, Reiling gets this process moving.

Flat glass, hollow glass, mixed glass – we offer a comprehensive collection, processing and recycling network, time and again finding new uses for one of the oldest materials. As a leading specialist in glass recycling, we use the latest processing techniques to create the best possible recycling chain. In doing so, we act as a partner to industry, local councils, retail, commercial companies and dual systems. We support them by providing the full spectrum of services, from collection, transportation and processing to the delivery of high-quality recycled materials.

We have the experience and flexibility to deal with even the most unusual challenges. With innovative techniques and our own expertise, we are constantly developing new and individual usage and recycling options, guaranteeing high quality that meets the needs of our customers. Geographically, we are in an excellent position – our strong network of recycling sites in Germany and abroad allows us to offer an outstanding infrastructure and to be close to our partners, customers and buyers. This creates a high level of efficiency and ensures short transport routes and fast decision-making, so that we can offer a wide range of services for used glass – always with the aim of retaining the materials' value.



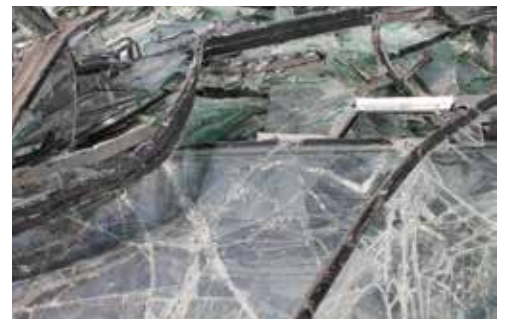
X-ray fluorescence system
for glass

Hollow glass:
So that single-use glass is not a dead end

White, green or brown hollow glass – we collect used glass in our extensive network of bottle banks, and then recycle it. This gives everyone the chance to support the recycling cycle and play an active role in saving raw materials, energy and land-fill space. The more consciously glass is collected and sorted and the fewer impurities end up in the bottle bank, the better the recycling quota. The end result is a starting product of the highest quality, benefiting our customers in further glass processing.

Flat glass:
High standards

We collect and accept flat glass from industry, retail or commercial companies, and also offer individual recycling solutions for special glass. We distinguish between float glass, windscreens, laminated glass, single-pane safety glass, insulation glass, coloured glass and special glass and prepare them for the melting process in individual processes. Here, too, we meet the highest quality requirements of our customers.





Sorting facility

SERVICES

- Provision of containers
 - Regular collection
 - Just-in-time collection
 - On-site advice
 - Complete documentation
-

Photovoltaics: Crystal clear

Glass is the main component of many photovoltaic modules, making it the main secondary raw material extracted from them. In addition, we optimally recycle other raw materials from the used modules and make sure that primary raw materials and energy can be saved through their use. This includes returning metals which are in limited supply to the materials cycle. Our end products meet high standards in terms of purity and all other quality features.



Revitro: Recycling – One idea further

Revitro – a creative and versatile design element. This decorative use of glass places high demands on processing. The first step is to purge the collected glass of impurities. It is then sorted by colour in a separate, multi-stage process. This creates products with incredible potential. Revitro is suitable for garden landscaping in bed and path design, statement objects, parking space dividers, permanently beautiful and long-lasting roof area designs, eye-catching trade fair constructions and bare-foot passages. Our range incorporates different colours and various particle sizes.



LIGHTWEIGHT RIGHT ON TREND!

PET bottles are popular. Two thirds of all drinks worldwide are packaged in PET bottles, and this figure is growing. Our example shows how Reiling is making these materials usable.

Just like glass, PET bottles are available in various colours. Right from when bottles are collected from supermarkets, discount shops and fillers, Reiling takes care to sort them into clear, coloured and mixed bottles – wherever this is possible and desired. We are flexible. We even accept mixed deliveries that contain drinks cans or other impurities and pass them on to our processing facility. Pre-sorting is therefore essential in order to create a high-quality end product.

After all, for the buyers of the flakes that result from the PET processing, the colour and purity are crucial factors. Clear flakes, for example, are turned into fibres for textile production or films. The recycled PET bottles may even be eventually processed into bottles again (bottle to bottle).



The PET bottles arrive pressed into bricks or balls.



Before they enter the processing plant, we separate the bottles again.



Impurities are removed and the bottles are sorted by colour, washed and finally shredded.



The end product: single-colour flakes.



Thorough exit controls support the production process.



The flakes are filled into "big bags" in a fully automatic process.



Bottle to bottle: bottles are turned back into bottles...



...or the flakes are used to produce fibres for further products.



"I WAS A BOTTLE"
From a PET bottle to a t-shirt
– a large proportion of the recycled product goes into textile production.

From freshly pressed to finely ground

A particular strength of ours in PET recycling is our network. Because we have transshipment points all over Germany, we can guarantee our customers reliable disposal. This extensive network and proximity to customers makes us especially flexible and fast, and reduces logistics costs.

PROVEN QUALITY FROM REILING WE MONITOR:

- | | |
|---------------------|-----------------|
| → bulk density | → impurities |
| → incorrect colours | → particle size |
| → glue residue | distribution |
| → foreign plastics | → moisture |
-

COLLECTING EMPTIES BETTER

Reiling is a partner of collection points such as discount shops, supermarkets and mineral springs. We support them at every level, for example by providing appropriate collection systems, undertaking transport – including on

demand – as well as intermediate storage, and accepting other related waste such as cans and films. In doing so, we adapt to individual requirements and work with our customers to develop our own customised solutions.





UP TO SPEED: **OUR PAPER RECYCLING.**

Be it newspapers, paper bags, packaging or cardboard boxes, we collect, sort and process all conventional types of paper.



Paper is very versatile and is found in all waste. We collect packaging and cardboard boxes from industrial customers, wholesalers and retailers, and every type of paper and card from commercial customers and private households, where we act as a partner to local councils. In practice, this means that our own staff and trucks collect the paper directly and

provide containers and collection systems. Some batches arrive at our plant excellently sorted, while others have other materials mixed in. In order to produce a clean end product, pre-sorting is therefore the crucial step in recycling. It results in single-variety used paper, 100% of which can go into material recycling.



**Collection from
commercial
businesses**



**Collection from
private households**



**Container
services**

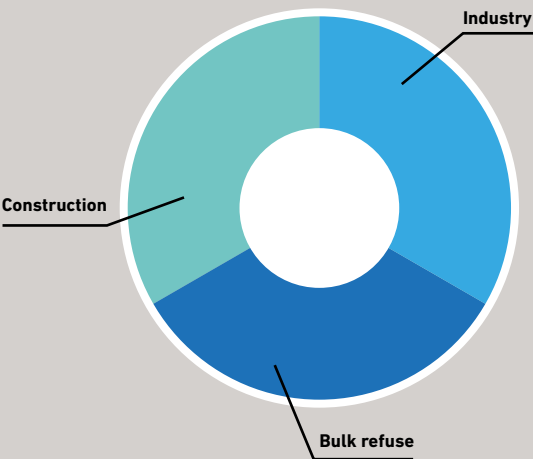
SECURITY AD ACTA: DESTRUCTION OF DATA CARRIERS AND SENSITIVE DOCUMENTS

We treat sensitive documents with particular care. Not only can files be made unreadable, we do the same with data carriers like CDs, discs, hard drives etc. - in a range of protection classes and destruction levels. We

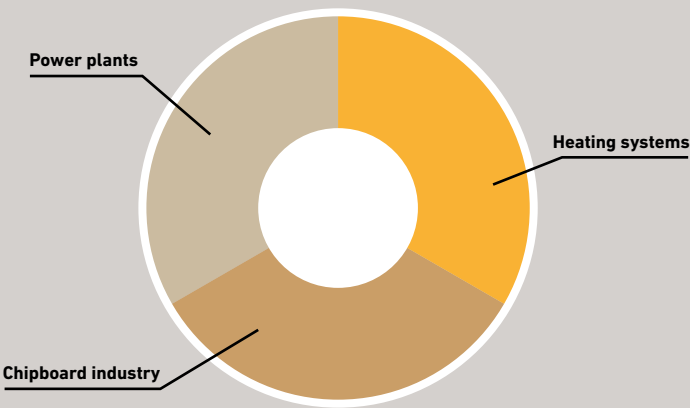
are happy to conduct recycling in accordance with data protection specifications. We offer a range of lockable security containers for on-site collection and transportation. Needless to say, our staff are specially trained and obligated to adhere to the German Federal Data Protection Act. In our security hall documents are destroyed in a shredder and then pressed. Customers can also deliver their data carriers and files themselves.



**COLLECTION
SOURCES**



BUYERS



FROM RUSTIC FENCES TO EURO PALLET. **WOOD RECYCLING.**

Waste wood is turned into new energy – or construction materials. Reiling processes the majority into woodchips for combined heat and power stations, and into raw materials for the chipboard industry.

Wood is a natural raw material that is used for a wide range of purposes. It is therefore common for wood to be processed and treated – just one reason why Reiling pays particular attention to any contamination in the used wood before any processing takes place. To do this, the first step is to examine the incoming material and sort it in accordance with the categories of the German Used Wood Ordinance. It is then cleaned, chopped, shredded and loaded ready for transportation. Our modern plants produce a range of chip sizes, depending on requirements.

Which used wood is suitable for which purpose always depends on how polluted it is with harmful substances originating from painting and treatment of the wood. We ensure high safety standards through careful exit controls and a tight-knit network of sampling for the laboratory.



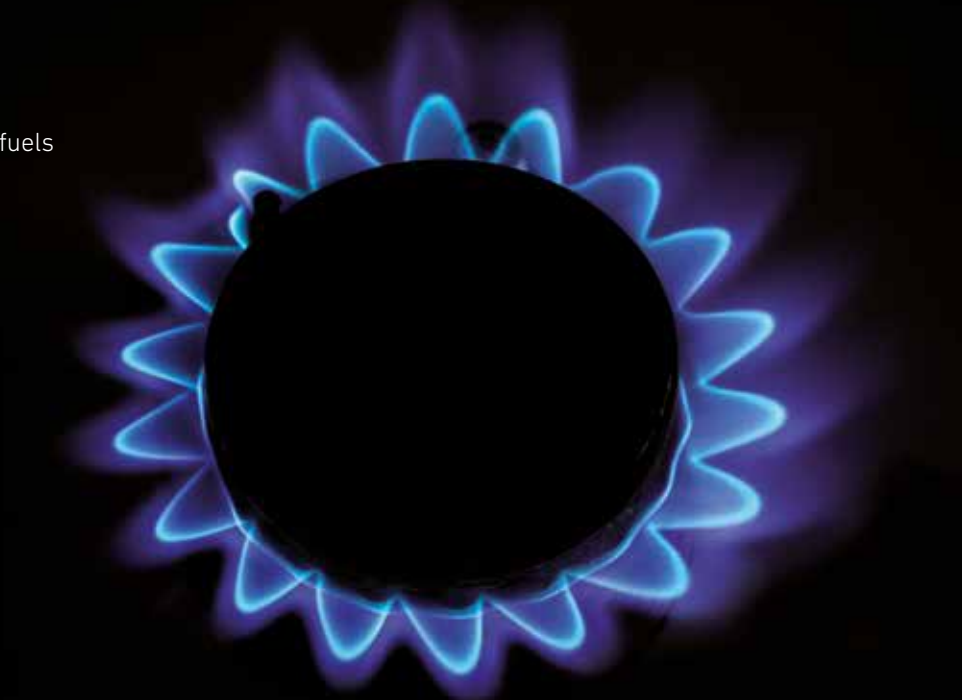
Chipboards



G30 woodchips

OUR SERVICES

- 24-hour collection
 - Just-in-time production
 - Container provision
 - Special special injection containers for woodchips
 - Exemption pursuant to Section 7 German Ordinance on Waste Recovery and Disposal Records
 - Excellent infrastructure – direct motorway connection
 - High level of flexibility
-



BRILLIANT IDEAS FOR NEW ENERGY.

Finding new energy resources is one of the big challenges of our time. For our substitute fuels, we specifically process substances that would otherwise be difficult to recycle. They replace other fuels, thus saving resources and protecting the environment.

Cement and power plants need a huge amount of energy, which is usually generated from coal. Reducing the use of this raw material is an active form of environmental protection and resource conservation. At Reiling, we process almost exclusively production waste as a substitute fuel. This waste comes from various industrial fields and refers to all combustible, non-recyclable waste except PVC.

We process a range of materials from, for example, the packaging industry, carpet production, plastics, hygiene products or label processing, and automotive suppliers.

We check the suitability of these incoming materials for combustion, thus achieving extremely high quality in the starting material. This leads to a homogeneous composition with all the chemical and physical properties needed for efficient combustion, from suitable particle size to low moisture and chlorine contents.

As a full service partner, Reiling provides all logistics for the substitute fuel through to coordination with the authorities. With ensured sales contingents and purchase guarantees, Reiling is a reliable and professional partner for both sides: suppliers and buyers.



UNIQUELY VERSATILE. OUR SERVICES.

Reiling collects, processes, stores, produces, designs, advises... We are one of very few companies to offer such a wide spectrum of services. New fields are being added all the time as we address the needs of our customers, exploit new potential on the market and constantly develop further.



FULL SERVICE

We offer collection systems ranging from containers to mobile PET presses, an efficient fleet of vehicles, professional logistics and, of course, the most state-of-the-art processing techniques. We have special vehicles, such as for separating

glass colours or with various crane technologies. And we have the expertise needed for council collections and container services. With a strong network of locations, we stand for short transport routes and fast communication.

LOCAL COUNCIL SERVICES



The Reiling Group is active in several areas including local council services. For example, we dispose of used glass, used paper, lightweight packaging, household waste and bulk refuse from private households on behalf of dual systems, towns and municipalities. Reiling provides the collection containers, collection vehicles and even the processing technology, tailored to the requirements profile.



The Reiling values

VEHICLE AND CONTAINER CONSTRUCTION



As an experienced company, we are extremely familiar with all collection and conditioning processes, allowing us to make our own contribution to ensuring the very highest level of service. The maintenance of vehicles and containers completes our range of services. We work hand in hand and ensure full service.

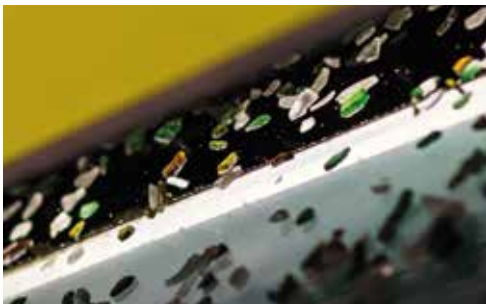
PROCESSING



Processing is the be-all and end-all for an outstanding starting product. We use a wide range of sorting techniques depending on the material, including processes we have developed ourselves especially for the purpose. This allows us to achieve very high purity in the recycled material and a quality that is tailored as closely as possible to the customer requirements. Our active contribution has been in the development of new sorting technologies along with our innovative product control processes, and we are always on the look-out for new applications for our products.

QUALITY AND INNOVATION. **HAND IN HAND.**

From collection to processing to sale of the recycled end product, with us you can have everything from one source – an unbeatable benefit when it comes to the best possible quality control and transparency.



Safe products and innovative thinking go hand in hand at Reiling. Throughout our company's history, we have frequently initiated developments, used our own processes and techniques to unlock new potential in recycling, and continued to optimise our processes.



Our integrated management system is based on and certified in accordance with internationally-recognised standards in order to ensure the quality of our services. Our management guidelines form the basis of robust planning and implementation of our corporate goals in the fields of technology, quality and the environment.

**QUALITY
MANAGEMENT**

DIN ISO 9001

ENVIRONMENT

Sustainability and environmental and social responsibility are integral parts of our business policy.

**ENERGY
MANAGEMENT**

DIN ISO 50001

INNOVATION

From new sorting technologies to our own product control processes and new product applications

FOUR GENERATIONS, ONE GOAL: **USING RECYCLABLE MATERIALS.**

Recycling runs in the family at Reiling. Back in 1900, Bernhard Reiling senior laid the foundation for the company, which is now one of the most versatile in its sector and considered a recycling specialist. Owner Bernhard Reiling explains the values on which the company is based.



Mr Reiling, you joined the family company in 1984. What were the challenges at that time?

Recycling was in the early stages and a lot was changing. Our company set up the first bottle bank for private households in the 1970s. The idea took off and we expanded our network of containers. Today, we collect used glass far beyond Germany's borders. When I took over management of the company, the main issue was adapting our technology to the fast-growing collection quantities, i.e. to become ever better and more efficient in processing. Here, too, we were consistently a pioneer in the industry.

Alongside glass recycling, did the company also progress in other material flows?

That is right, alongside glass recycling, we also recognised recycling potential in many other materials and expanded this field. We also grew geographically, for example with the development of sites where used glass is processed in direct proximity to the glass industry, such as in Torgau, Gladbeck, Lünen, as well as in Denmark and Poland. In Hamm-Uentrop, we set up a site for PET processing right next to the fibre industry. We reached a milestone in 1994 with the opening of a state-of-the-art plate glass processing plant in Marienfeld, and in 2009 with the development of the x-ray fluorescence plant, which identifies and separates out critical glasses such as lead glass and glass ceramics. Even in the former East German states, we were able to react to the growing demand with a processing plant for used glass in Osterweddingen.

Where does the company stand today?

Today, we are represented at twelve German and five international locations. The Reiling Group employs more than 500 staff, many of whom have been with us for years. I see things like that as some of the key strengths of a family company: strong cohesion, efficient decision-making and continuity of quality.

Back in 1900, your grandfather himself used to go out on a horse-drawn cart.

How has the business changed?

When it comes to materials, we now work within a complex system that is strictly regulated by law. But one thing has not changed: our conviction that raw materials are valuable and should be recycled. We save resources and protect the environment by supplying the processing industry with secondary raw materials. This principle is not a contradiction, environmentally or economically. It is what we now call a win-win situation – it benefits not only the environment, but everyone involved.

Mr Reiling, what makes Reiling stand out today?

On the one hand, our versatility – from the collection to the recycling of a range of materials. On the other hand our innovative strength. Perhaps it is because we are a family company: we are driven by the spirit of tackling challenges. When problems arise, we focus on the solutions and have the courage to move forward – albeit always in a considered and sustainable way. That is what makes us stand out.



In around 1900, Bernhard Reiling acquired a trade licence for travelling salesmen and began trading raw materials from a horse-drawn cart.



State-of-the-art in its day: sorting by hand on an assembly line.



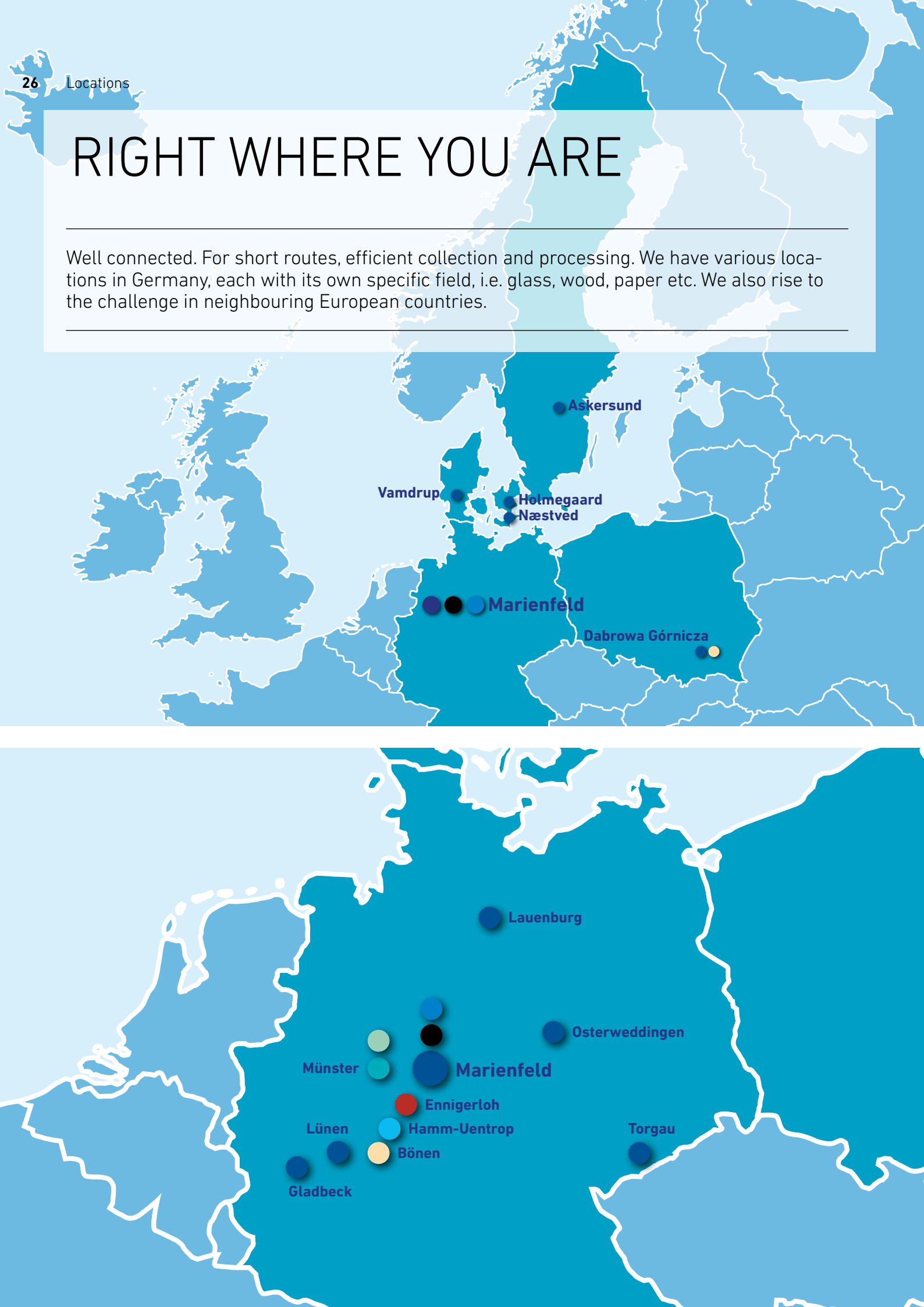
Glass collection in bottle banks began in the 1970s.



Reiling developed into an expert in glass recycling, from collection to processing.

RIGHT WHERE YOU ARE

Well connected. For short routes, efficient collection and processing. We have various locations in Germany, each with its own specific field, i.e. glass, wood, paper etc. We also rise to the challenge in neighbouring European countries.



MARIENFELD - Headquarters

GLASS | PHOTOVOLTAICS | REVITRO ●●●

Reiling Glas Recycling GmbH & Co. KG
 Bussemasstraße 49 | D- 33428 Marienfeld
 Headquarters: info@reiling.de
 tel.: +49(0)5247-9803-0 | fax: -33

MARIENFELD

PLASTICS | PET ●

Reiling Kunststoff Recycling GmbH & Co. KG
 Bussemasstraße 49 | D- 33428 Marienfeld
 Headquarters: info@reiling.de
 tel.: +49(0)5247-9803-803 | fax: -851

TORGAU

GLASS | PHOTOVOLTAICS ●

Reiling Glas Recycling GmbH & Co. KG
 Solarstraße 15 | D- 04860 Torgau
 Headquarters: torgau@reiling.de
 tel.: +49(0)3421-7291-0 | fax: -29

GLADBECK

GLASS | PHOTOVOLTAIK ●

Reiling Glas Recycling GmbH & Co. KG
 Am Wiesenbusch 34 | D- 45966 Gladbeck
 Headquarters: gladbeck@reiling.de
 tel.: +49(0)2043-97100-0 | fax: -10

OSTERWEDDINGEN

GLASS | PHOTOVOLTAICS ●

Reiling Glas Recycling GmbH & Co. KG
 Appendorfer Weg 4 | D- 39171 Sülzetal
 Headquarters: osterweddingen@reiling.de
 tel.: +49(0)39205-4509-10 | fax: -29

LÜNEN

GLASS ●

Ruhrglas Recycling GmbH & Co. KG
 Frydagstraße 39 | D- 44536 Lünen
 Headquarters: luenen@reiling.de
 tel.: +49(0)2306-2006-0 | fax: -18

LAUENBURG

GLASS | PHOTOVOLTAICS ●

R-Glas Recycling GmbH & Co. KG
 Söllerstraße 33 | D- 21481 Lauenburg
 Zentrale: lauenburg@reiling.de
 tel.: +49(0)4153-5833-0 | fax: -30

HAMM-UENTROP

PLASTICS | PET ●

Reiling Kunststoff Recycling GmbH & Co. KG
 K'Park Straße 20 | D- 59071 Hamm-Uentrop
 Headquarters: hamm@reiling.de
 tel.: +49(0)2388-30121-0 | fax: -51

MÜNSTERTOWN CLEANING | COMMERCIAL REFUSE |
FILE DESTRUCTION ●●

Reiling MS-Recycling GmbH & Co. KG
 Hessenbusch 180 | D- 48157 Münster
 Headquarters: muenster@reiling.de
 tel.: +49(0)251-249977 | fax: -247285

MÜNSTER

DISPOSAL CENTRE ●

EZN Entsorgungszentrum Nord GmbH & Co. KG
 Hessenbusch 184 | D- 48157 Münster
 Headquarters: info@ezn-muenster.de
 tel.: +49(0)251-289278-0 | fax: -1

BÖNEN

WOOD ●

Reiling Holz Recycling GmbH & Co. KG
 Weetfelder Straße 36 | D- 59199 Bönen
 Headquarters: boenen@reiling.de
 tel.: +49(0)2383-9360-0 | fax: -60

ENNIGERLOH

SUBSTITUTE FUELS ●

GRE GmbH & Co. KG
 Westring 10 | D- 59320 Ennigerloh
 Headquarters: info@ersatzbrennstoffe.net
 tel.: +49(0)2524-2626-0 | fax: -26

DK-VAMDRUP

GLASS | PHOTOVOLTAICS ●

Reiling Glasrecycling Danmark ApS
 Krumtappen 11 | DK- 6580 Vamdrup
 Headquarters: info@reiling.dk
 tel.: +45 755838-50 | fax: -70

DK-HOLMEGAARD

GLASS | PHOTOVOLTAICS ●

Reiling Glasrecycling Danmark ApS
 Glasværksvej 52 | DK- 4684 Holmegaard
 Headquarters: info@reiling.dk
 tel.: +45 555657-22 | fax: -44

DK-NÆSTVED

GLASS | PHOTOVOLTAICS ●

Reiling Glasrecycling Danmark ApS
 Maglemølle 60 | DK- 4700 Næstved
 Headquarters: info@reiling.dk
 tel.: +45 555657-22 | fax: -44

PL-DABROWA GORNICZA

GLASS | PAPER ●●

DSS Recykling Sp.z.o.o.
 ul. Magazynowa 1 | PL-42-530 Dabrowa Gornicza
 Headquarters: info@dss-recykling.pl
 tel.: +48-(32)2608970 | fax: -(32)2938971

SWE-ASKERSUND

GLASS | PHOTOVOLTAICS ●

Swede Glass United AB
 PO Box 49 | SWE- 696 21 Askersund
 linda.bernstrom@swedeglassunited.com
 tel.: +46(0)583-821-95 | fax: -99



Reiling GmbH & Co. KG
Bussemasstraße 49
D- 33428 Marienfeld
Headquarters: info@reiling.de
tel.: +49(0)5247-9803-0
fax: +49(0)5247-9803-33
www.reiling.de